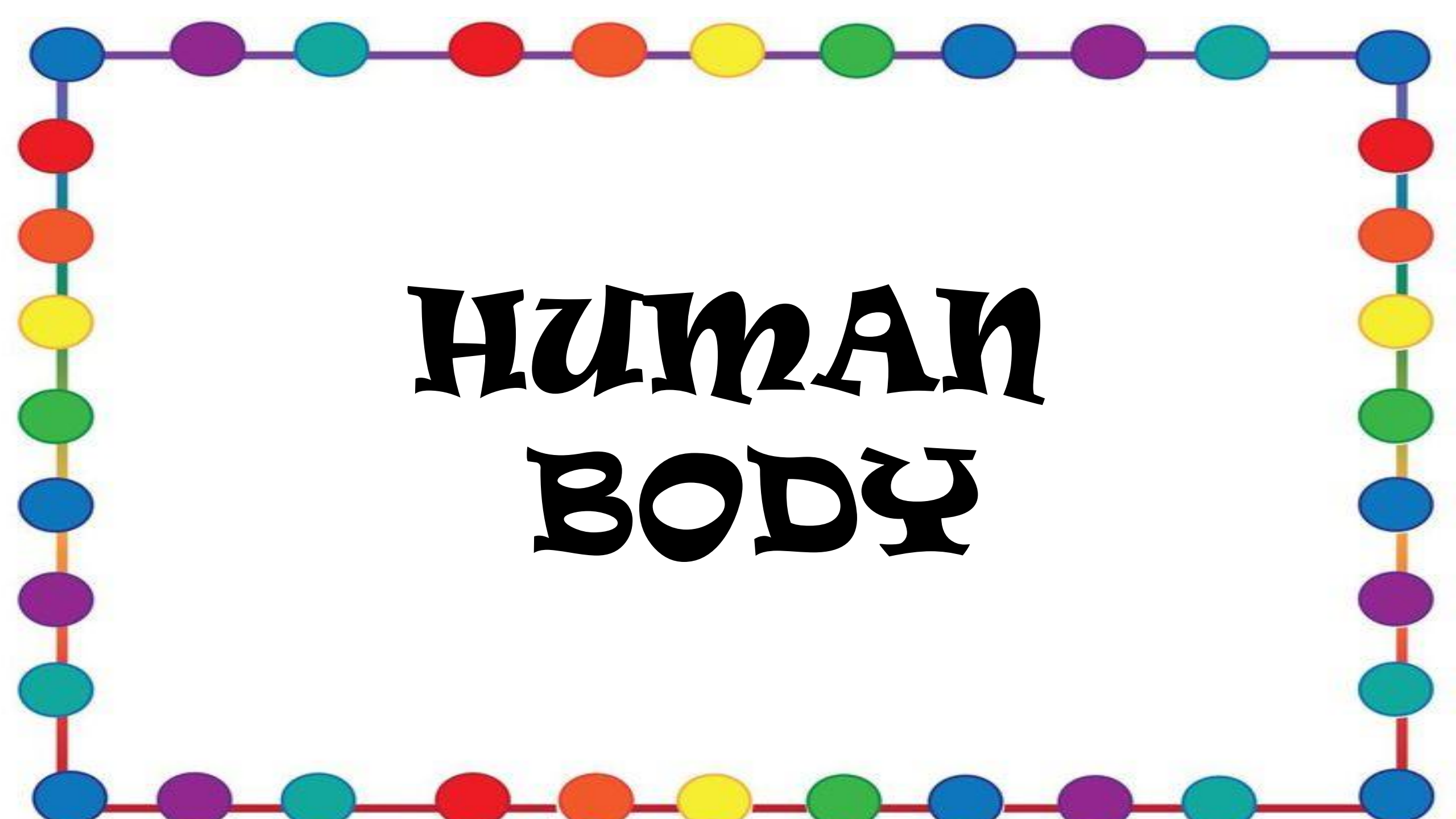


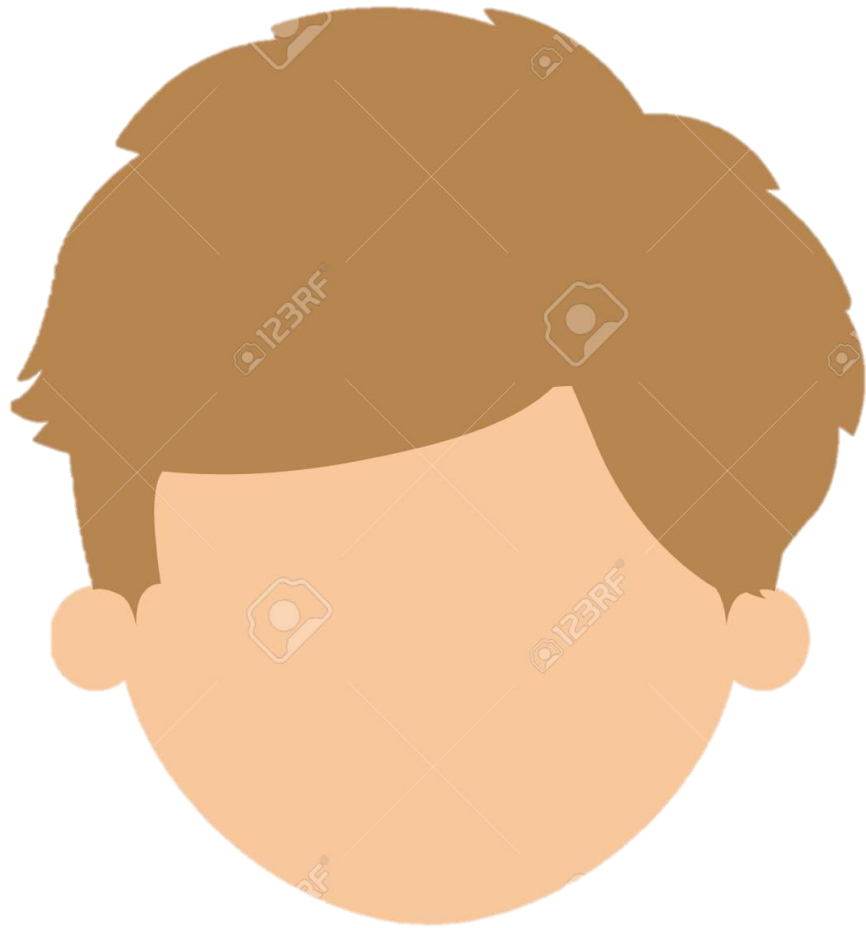


VOCABULARY

#9

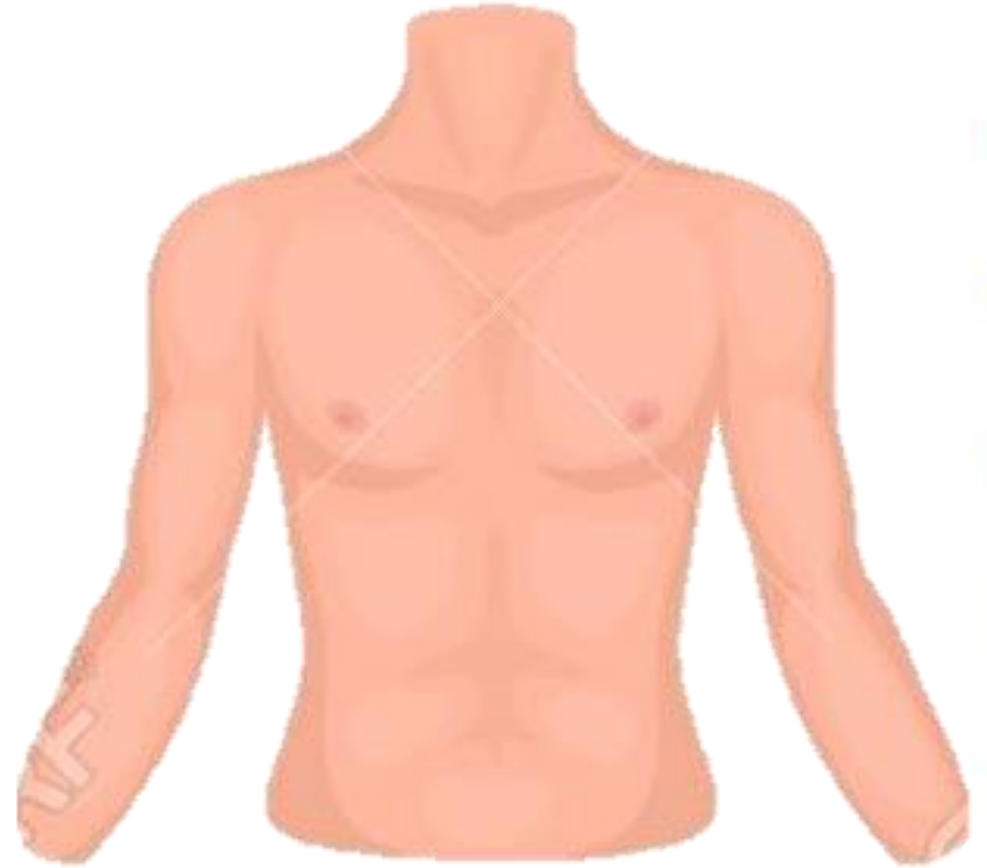


HUMAN BODY



HEAD

TRUNK





LIMBS



VOCABULARY

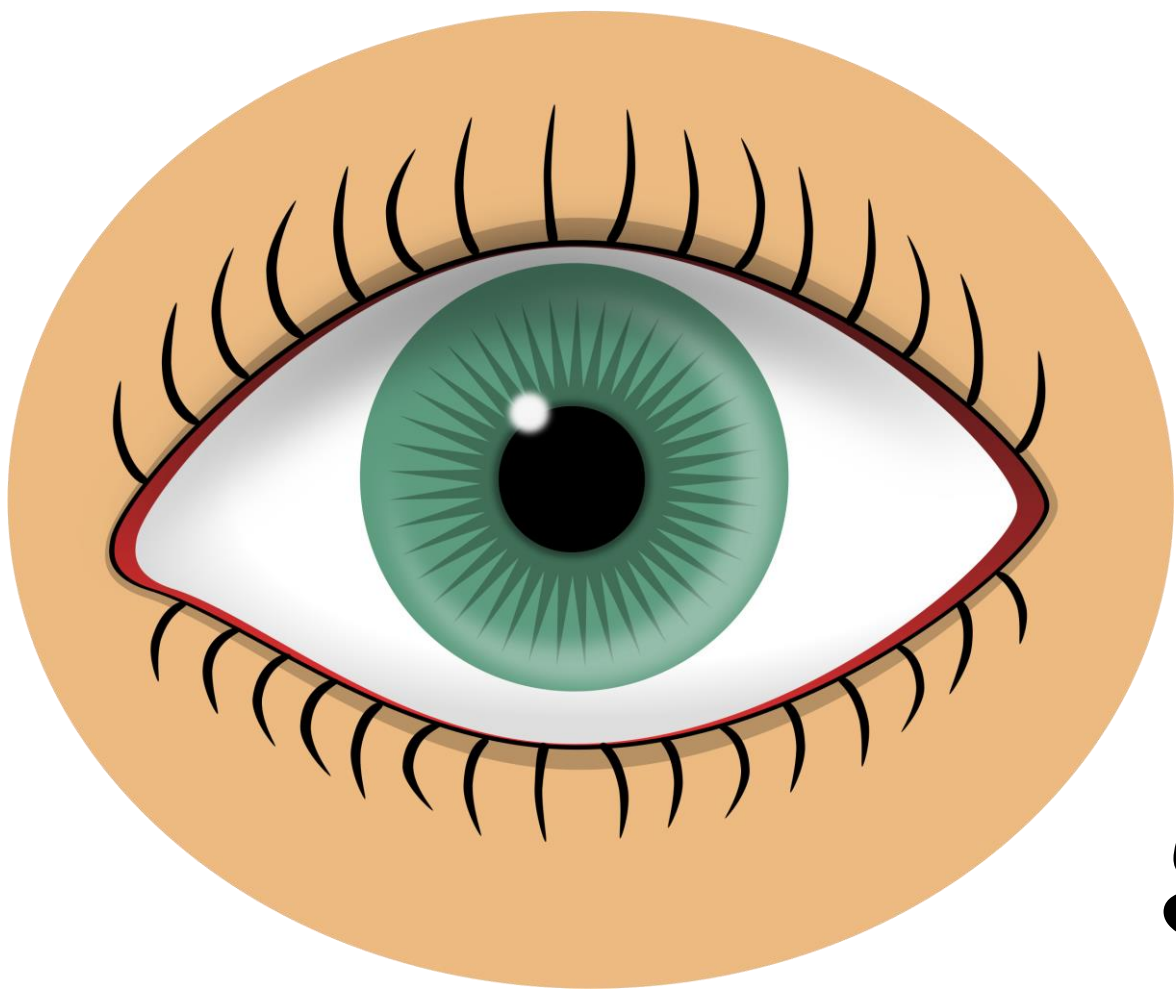
#10

A decorative border consisting of a rectangular frame of colorful circles. The top and bottom horizontal lines are purple, while the left and right vertical lines are blue. The circles are arranged in a repeating sequence of colors: blue, purple, teal, red, orange, yellow, green, and blue. The word "SENSES" is centered in the middle of the frame in a bold, black, stylized font.

SENSES

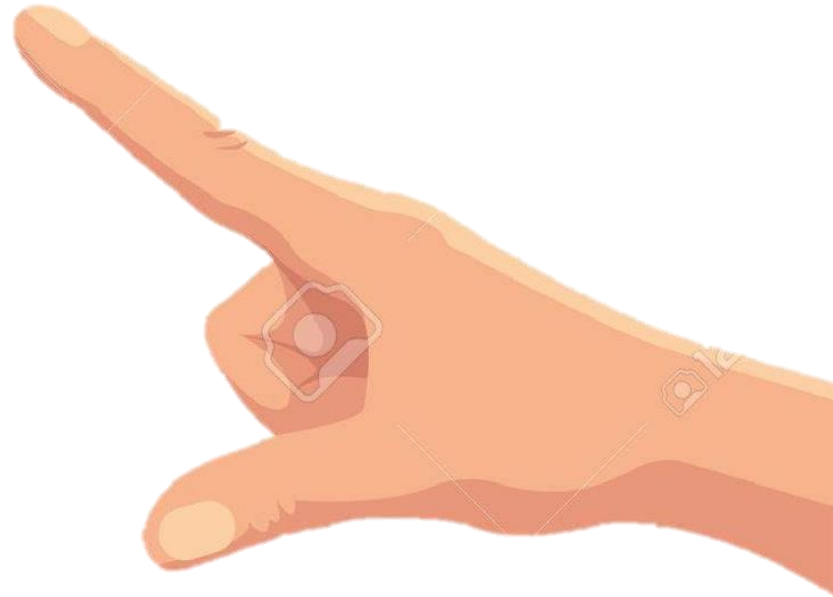
HEARING





SIGHT

TOUCH





bitter



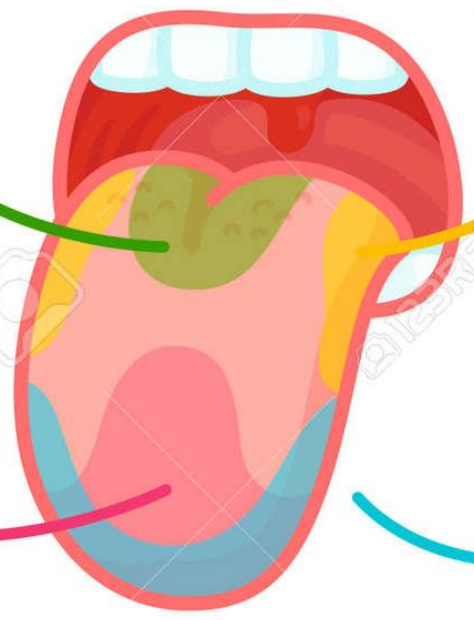
sour



sweet



salty



TASTE

SMELL



VOCABULARY

#11

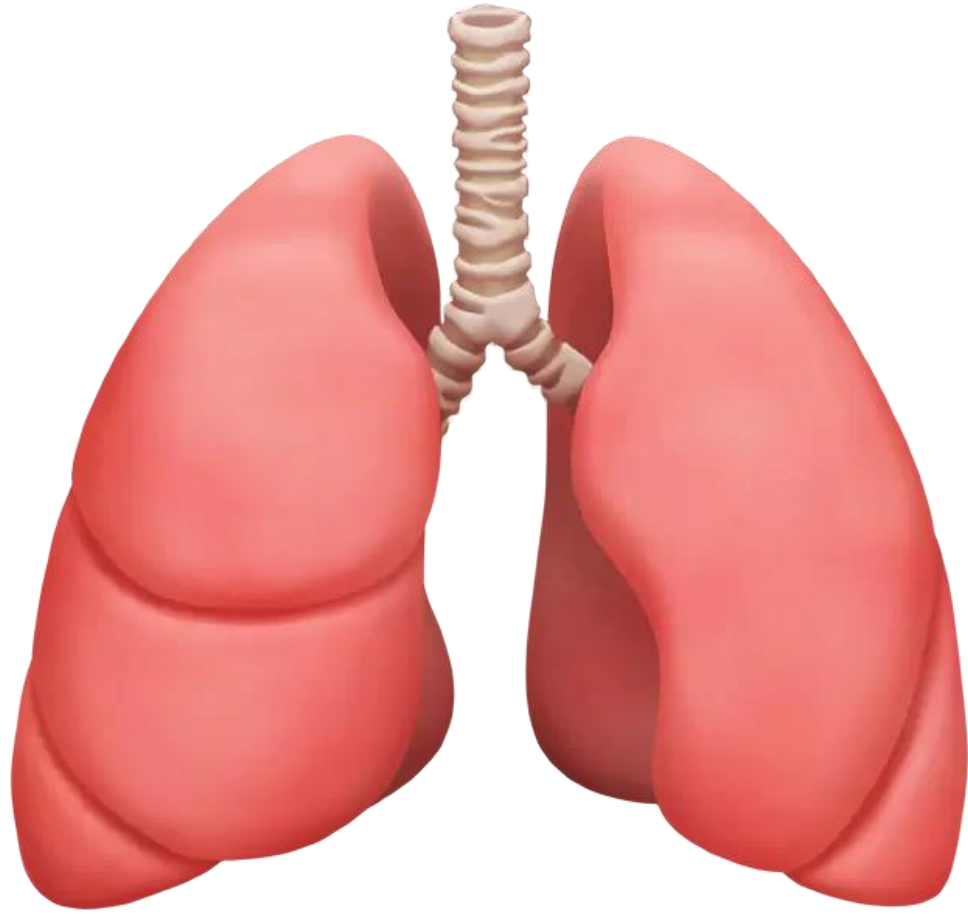


INTERNAL ORGANS



BRAIN

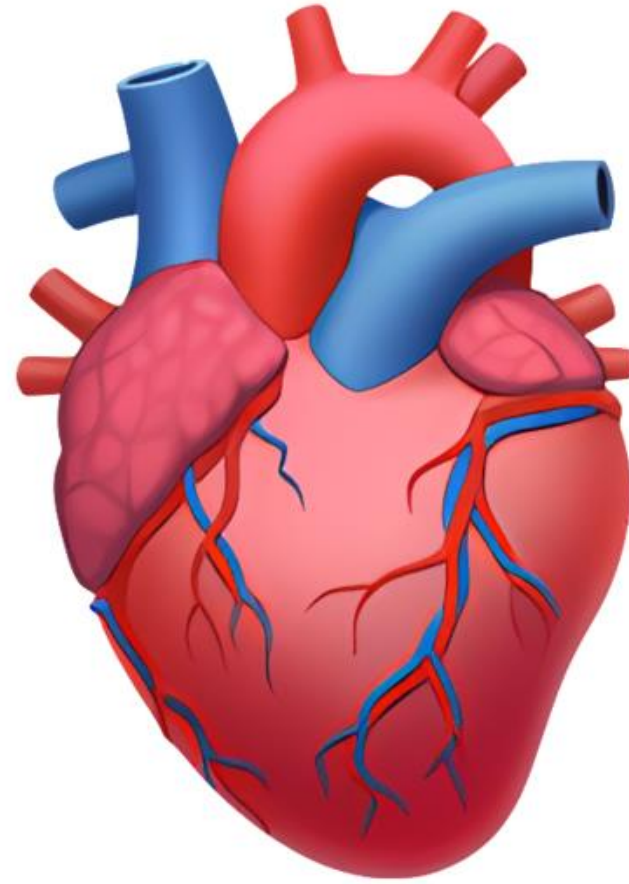




LUNGS



HEART





STOMACH



VOCABULARY

#12



LOCOMOTOR SYSTEM



BONES



MUSCLES



ELBOW ➔





KNEE



SHOULDERS

